

STATEWIDE ENTERTAINMENT CALENDAR & RESTAURANT GUIDE

# FLO RIDA

INTERNATIONAL MAGAZINE

**BUILT TO LAST**  
**82** DEVELOPERS  
REDEFINING  
REAL ESTATE

**FATHER'S DAY**  
**GIFT GUIDE**  
GADGETS, GEAR AND  
COOL TOYS TO ROCK HIS DAY

**SUMMER FASHION**  
**HEATS UP**  
SHORT, SEXY & RETRO

**DIVE IN**  
POOLS WITH PIZZAZZ

**PLUS:** Gourmet Picnics  
Patio Furniture & Accessories  
Must-Have Travel Bags  
Top Hotel Suites in Florida

**WHAT'S IN THE**  
**STARS FOR LENNY KRAVITZ?**  
HOROSCOPE PAGE 135

JUNE 2006

\$3.95US \$6.95CAN



0 74470 01218 4

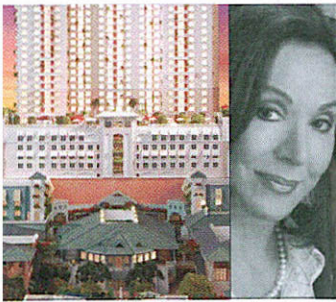
INSIDE THE MOST EXCITING MARKET IN THE COUNTRY

# HOT PROPERTIES



# GROUNDBREAKERS: FLORIDA DEVELOPERS 2006

Real estate development knows how to steal the spotlight. Far from bashful, it uses skyscraping cranes, dust clouds and closed streets to announce its arrival with theatrical aplomb. And directing it all are the real estate developers. With the peninsula as their stage, they envision, execute and unveil, all of it done with the budget of a summer blockbuster. *FIM* scours the state — north, south, east, west and central — to meet the individuals behind the scenes, learn about their respective companies, and sneak a peek at the latest marquee projects currently in production.



**Evangeline Gouletas**  
**Chairman & CEO, Skyline Equities**  
**Realty, Miami**

Long before she set her sights on Miami's Brickell Avenue, Evangeline Gouletas was a seasoned developer with national accomplishments — over \$5 billion in luxury condominiums sales and more than 30,000 of such residences developed in 40 markets throughout the country. Her South Florida urban stunner, Skyline at Mary Brickell Village, is a mammoth of a complex with well-known restaurants, retail, a Bally's gym, as well as 369 condominiums that will feature superior amenities and finishes. Gouletas's signature is also imprinted on Skyline on Brickell, her previous highrise, now completed, which stands on one of the last remaining waterfront residential parcels on Brickell Avenue.